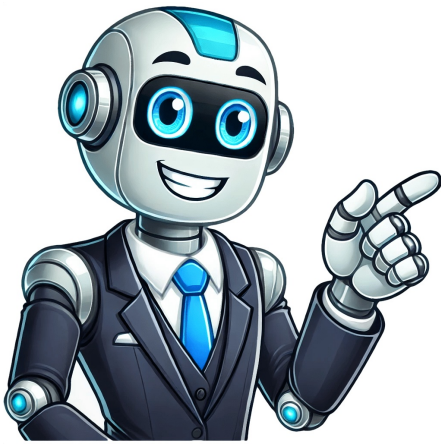


Click to prove
you're human



Family practice williamsport pa

Hours: HoursPhotosSeptember 2024Provider was friendly, professional, and listened to my concerns.August 2024Dr. Lombard is a wonderful physician. He is caring and especially attentive to your needs. He passes no judgment, only offers the very Best medical advice. Very happy to have him as my PCP. His nurse Melissa O, is also tops. She is very caring, and listens when I have questions ot concerns. They are the BEST !August 2024Doctor Bresticker has always been a great and caring doctor I've been going to him for 35 yearsMore Comments(68)About Family Practice Center, PCFamily Practice Center, PC, located on River Avenue, 1st Floor, in Williamsport, has several Physicians, Nurse Practitioners and Physician Assistants serving patients six days a week. We offer early morning and evening appointments during the week as well as an Acute Care Clinic from 8 am to 5 pm on Saturdays for patients who need acute medical care but don't need the ER. New patients are welcome at this FPC location!You May Also Like Family Medicine at UPMC Williamsport provides primary care services to residents of Lycoming County and the surrounding areas. Family Medicine at UPMC Williamsport Services You can count on Family Medicine at UPMC Williamsport doctors and staff team to provide high-quality care in a comfortable setting for your whole family. We focus on: Primary care. Family medicine. Our Hours Monday through Thursday - 8:00 a.m. to 5:00 p.m. Friday - 9:00 a.m. to 5:00 p.m. Why Choose Family Medicine at UPMC Williamsport? We offer our patients: Same-day appointments. Walk-in care. Expanded office hours, including Saturdays and evenings. Registered nurse (RN) triage — 24 hours a day, 7 days a week. Our team; we're here when you need us Our team includes: Family medicine doctors. Advance practice professionals. Office staff. Find another primary care location in North Central Pa. 700 High St. Williamsport, PA 17701 Contact Us UPMC Family Medicine at Loyalsock offers primary care to Lycoming County residents and neighboring areas. Our Services You can count on UPMC Family Medicine at Loyalsock doctors and staff team to provide high-quality care in a comfortable setting for your whole family. We focus on: Primary care. Family medicine. Our Hours Monday through Thursday - 8:00 a.m. to 7:00 p.m. Friday - 8:00 a.m. to 5:00 p.m. Saturday - 8:00 a.m. to Noon Find another primary care location in North Central Pa. 1205 Grampian Blvd. Williamsport, PA 17701 Learn More UPMC Williamsport Family Medicine Residency at UPMC Williamsport has graduated more than 300 physicians and is the premier health system at which to pursue medical training in north central Pa. We take pride in helping residents from across the country create a foundation for their career in medicine. If you're a prospective resident, we invite you to consider a residency in Williamsport, Pa. Learn more about the area. Learn how our residency program can help you further your medical career.Why Train Here? Interested in applying for a residency position at the Williamsport Family Medicine Residency? Check out our requirements.Residency Application UPMC Williamsport Family Medicine Residency 740 High Street, Suite 4001 Williamsport, Pennsylvania 17701 sus-williamsportfmr@upmc.edu Phone: 800-837-2011 UPMC Primary Care at Pine Street in Williamsport, Pa. develops long standing patient relationships and follows them throughout their lifetime. We have a team-based approach and customize every patient's treatment plan. Our team will evaluate, treat, and monitor your wellness and health concerns. Our Services You can count on our primary care and pediatric providers in Williamsport to deliver high-quality services in a comfortable environment for your entire family. We provide: Primary care. Pediatrics. Why Choose UPMC Primary Care at Pine Street? At UPMC Primary Care at Pine St. we offer our patients: Same-day appointments. Walk-in care. Expanded office hours, including Saturdays and evening appointments. RN triage available 24 hours a day, 7 days a week. Our team Family medicine physicians. Pediatricians. Advanced Practice Professionals (Physician Assistant and/or Certified Registered Nurse Practitioner). Clinical staff. Office staff. Registered nurse (RN) triage team. Find another primary care location in North Central Pa.