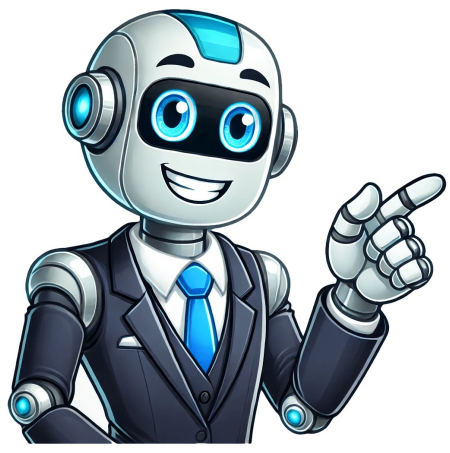


Click to verify



Is nissan juke 2011 a good car

The report below is one of the many we found online: “While parked in our driveway for more than 30 hrs, my 2013 Juke burst into flames. Showing 8 of 249 reviews.All Ratings1 Star2 Stars3 Stars4 Stars5 StarsRatingSortMost RecentMost HelpfulRated High to LowRated Low to HighSort The Nissan Juke is a subcompact SUV that was introduced in 2011 and halted production in 2017. I was lucky that only property was damaged but I feel Nissan USA is not taking the incident seriously.” The 2013 Juke had a total of 120 problems according to CarProblemZoo.com and 48 complaints at CarComplaints.com. THE BEST CARS FOR SNOW Winter driving impacts young and experienced drivers alike. Touched with a wrench and spewed fuel. The Nismo RS is packed with a slightly more powerful engine, bigger brakes, and more aggressive suspension and steering tuning. Drawing on user experiences and detailed data, here are some prevalent problems with the Nissan Juke: Electrical issues leading to rapid battery depletion Turbocharger problems, often resulting from a blocked oil feed tube Confusion around the operation of the Continuously Variable Transmission (CVT) and genuine mechanical issues causing stalling Excessive wear of the front suspension's inner tie rod ends Stretching of the timing chain, potentially causing engine problems Recalled fuel pressure sensor, which may lead to leaks If you're driving or planning to buy a Nissan Juke, stay vigilant for these issues. The Juke Color Studio customization program was also implemented when this model year was released. The best part? The prices here reflect what buyers are currently paying for used 2011 Nissan JUKE models in typical condition when purchasing from a dealership. How long do they typically last? How often should you replace your brakes? Are Nissan Jukes Generally Reliable? Based on our analysis of the exclusive features of each trim, we would recommend going for the S or SV if you are looking for a no-frills daily driver. Finally, its slightly elevated driving position, generously proportioned side mirrors and good driver sightlines make the Juke easy to maneuver in all but the tightest confines. It is fun to drive, the reaction of a sports car with the safety of an SUV. Nissan has said that they examined the car and their technical specialist found “no evidence of a product problem, failure, or malfunction that may have caused or contributed to this incident”. In profile, the Juke's muscular side contouring, fall-away roofline and wedge-shaped greenhouse create a genuinely interesting look that resolves into a Murano-meets-Volvo C30 tail treatment capped with a decently sized single-piece hatch. Unless you're a mechanic or super-dedicated car enthusiast, you might not know much about the brakes on your car. The back seat is not for adults especially on longer journeys. ... Now let's get to the good stuff! This car is sporty, really sporty. Owners reported sudden air conditioning issues, loss of power, rapid and unintended revving, and turbocharger failure. I absolutely love this zippy fun AWD crossover, perfect for a commuter!” 2015 Nissan Juke The 2014 Juke is the oldest model year on this list. Edmunds: 4.1 / 5.0 Kelley Blue Book: 4.3 / 5.0 JD Power: 79 / 100 2014 Juke, Edmunds review: “I have liked the look of the Juke since I first saw it in 2011. HOW OFTEN SHOULD YOU REPLACE YOUR BRAKES? Intelligent AWD with Torque VectoringAvailable on all three Juke trim levels, Nissan's Intelligent All-Wheel Drive system can create up to a 50/50 front/rear power split and also distribute torque from side to side on the rear axle to improve handling and reduce understeer when cornering. Why would a low-mileage, well-maintained vehicle catch fire unless there was some kind of product failure? A thick-rimmed three-spoke multifunction steering wheel and well-bolstered front buckets team well with its driver-friendly dash layout and legible main gauge cluster. What Reddit Says About the Best Year of the Nissan Juke: Nissan's Juke made waves with its polarizing looks and compact crossover style. Sport mode is addictive. It handles well, responds to steering and foot pedals quickly. The check engine warning light was illuminated. It may not suit those with traditional tastes but it is definitely a good grab for those looking to be noticed in traffic. With high repair costs and the possibility of encountering electrical and engine problems, prospective owners should factor in these potential expenses when considering a Juke. The contact stated that on various occasions while driving at various speeds, a rattling noise was heard coming from the engine compartment. The worst model years of the Juke are 2011, 2013, and 2012. It also has an option for All-Wheel Drive, offering better control and stability in snowy or icy conditions. I have run sport mode briefly, basically it kicks up the CVT 1,000 RPM's and you get a lot more torque, but the gas bill will skyrocket! I am getting somewhere around 30 mpg which is great. New to this particular model are the special edition Stinger models, and a newly standardized Siri Eyes Free feature for the base and midrange trim levels. The entry-level S trim includes 17-inch alloy wheels, a rearview camera, and full power accessories, among other practical features. In terms of performance, this model year can assume multiple personalities. Both offer dependable performance and longevity, with many still on the road today going 100,000+ miles strong. Plus, its compact size makes it ideal for city dwellers who frequently deal with tight parking spaces. Based on comprehensive evaluations from motorbiscuit.com, here are the most reliable Nissan models: Nissan Rogue Select Nissan Versa Nissan Versa Note Nissan Sentra Remember, every model's reliability can be influenced by how well it has been maintained. It boasts appealing features and has fewer reported issues, making it a leading choice for those considering this model. Mechanic investigated the leak and Nissan Juke recalls. Fuel found leaking under the car. Opting for the sophisticated "Intelligent" all-wheel drive package that includes class-exclusive rear torque-vectoring capability also trades the base torsion-beam rear axle for a multi-link design that further enhances the Juke's already impressive cornering prowess. The Juke is not for tall or large-stature people though, it fits me perfectly but I am 4'10, my son had a hard time getting in ... he's 6'2. All versions of the 2011 Nissan Juke are fitted with the automaker's new 1.6-liter "DIG" (Direct Injection Gasoline) in-line four-cylinder engine that boasts the holy trinity of modern engine tech – direct fuel injection, turbocharging/intercooling and variable camshaft timing (here on both the intake and exhaust valves) to deliver an impressive mix of performance and economy. While there is only 1 interior color scheme, prospective owners can choose from up to 9 different exterior body colors. While a lot of people have voiced strong opinions (both positive and negative) about the exterior form factor, the interior is almost as polarizing. In this article, we'll check out all of the best and worst model years of the Juke. The ride is comfortable, I love all the bells and whistles. The inside has several organic curves and body-colored surfaces mixed with silver accents and other unique dimensions. It comes fitted with a turbocharged 1.6-liter 4-cylinder engine (188 horsepower) that is good enough, especially since the Juke is on the lighter side for an SUV. Passing on the interstate is never an issue, just tap that gas pedal and she zooms. But what about the Jukes that are worth considering? I'm single and not concerned the back seat is cramped (so is the new Jeep Renegade, I picked the Juke over that for performance reasons). The SV adds premium upholstery cloth, a power moonroof, automatic climate control, I-CON multifunction controller, subscription-based XM Satellite Radio, a USB port and privacy glass, while SL trim includes the Navigation Package, leather upholstery, heated front seats, the RearView Monitor system, fog lamps, and auto on/off headlights. Although some may rightfully ding the ride for being a tad harsh over rough pavement, body roll is impressively curtailed and its decently-sorted electric power steering, wide front/rear track dimensions and healthy wheel/tire fitment help ensure the Juke feels equally at home whether zipping through the twisties or cruising down a freeway. A manual-equipped front-drive Juke can sprint to 60 mph in around seven seconds, while the CVT and AWD each add about a half tick each to that baseline figure. In some cases, owners were advised to replace their engines entirely. Remember, knowledge is power when it comes to buying used vehicles. The higher-end SL trim has all of the standard features mentioned above plus fog lights, leather upholstery, and automatic headlights. Front-wheel-drive is the standard configuration but an all-wheel-drive system can be equipped (for the CVT models only). We've compiled a list of the best cars for snow, so you can get from Point A to Point B as safely as possible. The 2011 and 2012 models are also solid buys. So while a 4/5 rating is good, it's easy to see why it ranks lower than other subcompact SUVs. Which Nissan Juke Years Are The Least Reliable? In the former, I-CON commands all heat/air functions while the latter features Normal/Sport/Eco settings that appropriately revise the electronic mapping for throttle response, transmission shifts and steering feel. Notably, the Juke comes with a unique cold-weather package that includes seat warmers and mirror defrosters, a boon for those living in colder climates. However, the potential issues listed above should be taken into consideration. According to repairpal.com, the average maintenance cost per year for subcompact SUVs is \$466. Since its sales didn't even break 9,000 vehicles, there simply isn't enough data to fully include it among the most reliable Nissan Juke year models. If you're a potential buyer, you need to know what the most reliable Nissan Juke year models are. To gauge its long-term reliability, we've combed Reddit for unfiltered opinions from Juke owners. This SUV secured a 4 out of 5 star NHTSA safety rating based on how it performed in various crash tests. BE CERTAIN YOU'RE GETTING THE BEST DEAL. CoPilot searches your area and lets you know if there's a better deal on a similar vehicle nearby, so you're always certain you got the best deal possible. Check out our About Us page to see how CoPilot works. Tell us what you're looking for and we'll search the inventories of every dealership in your area to make you a personalized list of the best car listings in your area. Get a Curated List of the Best Used Cars Near You The CoPilot car shopping app is the easiest way to buy a car. Some of the knobs and trim are cheaply made, but with just me in it, I won't have a problem. Then turned off by hand. Common problems: Turbo failure Blown engine Very poor gas mileage 2011 Nissan Juke The 2013 Juke had similar engine-related problems to the previously discussed 2011 model year, but also had a lot of equipment and electrical problems. While the Nissan Juke may not be known for its outstanding reliability, there are some aspects that it has managed to excel at. CoPilot is built using the same technology that dealerships use to buy and sell their inventories, so we have more info on each vehicle than competitors. The fire started in the engine compartment at 12:40am. It also comes with a smooth-running touchscreen infotainment system. Thus, always consider the vehicle's service history when purchasing. 2011 Nissan JUKE pricing starts at \$4,380 for the JUKE S Sport Utility 4D, which had a starting MSRP of \$21,850 when new. I average 29.2 mpg in economy mode, which blows my jeep out the water. Go for the Nismo RS if you want to have a sportier experience in exchange for a higher price point. It's equally important to know which years are the least reliable if you're considering a used Nissan Juke. Here are the most reliable Nissan Juke year models: 2011 Nissan Juke 2012 Nissan Juke 2017 Nissan Juke The 2017 Nissan Juke is the most lauded version of this model. Nissan will not tell me why the car burned up, just that they're not responsible. Intake removed and found the fuel pressure sensor not adequately torqued. It carries on largely unchanged from its direct predecessor (2013 Juke) but has had significantly lower complaints and lacked the issues that plagued owners of the previous model. When it comes to reliability, some Nissan models tend to shine brighter than others. Be sure you know what you are getting into, and it could turn out to be a wise purchase. The Eco mode provides leisurely acceleration at maximum fuel efficiency while the Sport mode is livelier but at the cost of slightly higher fuel consumption. It is also the first model year ever produced, which shouldn't come as too much of a surprise. But eye-catching design means little without dependability. These prices are updated weekly.Based on a modified version of Nissan's highly-respected B-platform that also underpins the Cube and LEAF models, the 2011 Nissan Juke is an exercise in confident control. These are the model years you may want to avoid: 2013 Nissan Juke 2014 Nissan Juke 2015 Nissan Juke 2016 Nissan Juke From electrical issues to engine problems, these model years are better off being avoided. Regardless of whether your Juke is from one of the model's best or worst production years, you may encounter these problems! Only looking for newer models? Our favorite safety features for this model year are the Around View Monitor with Object Detection, Torque Vectoring All-Wheel-Drive, and Siri Eyes Free. Every 2011 Nissan Juke variant comes packed with desirable features. This score ranks the Juke 7th place out of 7 in its subcompact SUV class. The 4 cylinder turbocharged engine will do 0-60 in 7 secs, this would rival some 2 door coupes. Edmunds: 3.9 / 5.0 Kelley Blue Book: 4.3 / 5.0 JD Power: 78 / 100 2017 Juke, Edmunds review: “I LOVE MY JUKE!!! I realize this car won't be for everyone so let's get the obvious negatives out of the way first; Cargo space is limited (but there is a split folding for extra room). These can mean dealing with additional maintenance or repair costs over time, particularly if you're purchasing an older, higher-mileage model. Storage is limited, but I added my own. A manual love-it-or-hate-it proposition, the Juke's sheetmetal defiantly blazes a visual trail where other competitors arguably – and perhaps prudently – fear to tread. For those looking for additional bells and whistles, the optional Tech package integrates a navigation system with a 5.8-inch color touchscreen infotainment system. Owners praised the following aspects of this model: engine, fuel economy, acceleration, and driving experience. Being aware of these issues can be beneficial, especially if you're planning to buy a used Nissan Juke. This allows buyers to mix and match colors for the body, wheels, side sills, rear spoiler, and door handles for the ultimate customization experience. Match the symptoms of the recall exactly.” The 2012 Juke had a total of 96 problems according to CarProblemZoo.com and 50 complaints at CarComplaints.com. According to EPA, fuel economy is above average for the segment. However, stability/traction control and antilock disc brakes are standard across the lineup. Most Reliable Years For The Nissan Juke When considering reliability, the Nissan Juke may not have the most stellar reputation when compared to other brands. Front-drive models also offer a hidden stow space under the cargo floor. Common problems: Transmission failure Turbocharger not working Engine problems 2013 Nissan Juke Midnight Edition Package Owners of the 2012 Juke suffered from various engine-related ailments and defects, most of which have already been discussed in the earlier "worst" entries. Another pressing area of concern is related to the fuel system of the model. THE NISSAN JUKE YEARS TO AVOID Reliability wasn't the strongest suit of the Nissan Juke, so certain model years are more problematic than others. But based on reports, if you're after reliability, these Nissan models could be a safe bet, offering longevity and dependability. It's prudent to set aside a budget for potential unexpected repairs. Mechanic found fuel leak under intake – see recall 14v683. According to EPA estimates, the Juke can provide 29 MPG for combined driving, 28 MPG for city driving, and 32 MPG for highway driving. Common problems: Engine will not start Timing chain broke Blown Transmission Related: 7 Most Common Problems With Nissan Leaf (Explained) Model YearComplaints(CarComplaints.com)Problems(CarProblemZoo.com)Recalls(NHTSA.gov)2017 Nissan Juke01412016 Nissan Juke73612015 Nissan Juke84812014 Nissan Juke267822013 Nissan Juke4812012012 Nissan Juke509642011 Nissan Juke501893 Transmission failure Turbocharger not working Blown engine Very poor gas mileage Engine will not start Timing chain broke Blown Transmission overheating, whining Loss of power Various electrical issues Shuddering, shaking Internal failure in transaxle Loud whine Car shuts down while driving Gear box failed Make & ModelScoreMSRPFuel Economy (MPG)Buick Encore8.1\$15,157 – \$19,448City: 24 – 25 /Highway: 30 – 33Mazda CX-38.1\$16,249 – \$19,607City: 27 – 29 /Highway: 32 – 34Mini Cooper Countryman8.0\$19,312 – \$21,724City: 21 – 25 /Highway: 30 – 33Chevrolet Trax7.9\$14,545 – \$16,303City: 24 – 25 /Highway: 30 – 33Honda HR-V7.9\$18,466 – \$22,010City: 25 – 28 /Highway: 31 – 34Jeep Renegade7.8\$16,634 – \$21,683City: 21 – 24 /Highway: 29 – 31Nissan Juke7.8\$15,922 – \$30,930City: 25 – 28 /Highway: 29 – 33Fiat 500X7.7\$14,170 – \$18,164City: 21 – 25 /Highway: 29 – 33Subaru Crosstrek7.6\$18,102 – \$20,403City: 23 – 26 /Highway: 30 – 33Nissan Rogue Sport7.1\$16,169 – \$19,564City: 24 – 25 /Highway: 30 – 32Mitsubishi Outlander Sport7.0\$14,877 – \$20,216City: 22 – 24 /Highway: 27 – 30 Source: cars.usnews.com, edmunds.com Related: 9 Best & Worst Nissan Leaf Years (With Pictures) Intent on expanding its presence in the increasingly popular compact crossover market with a vehicle that stands out from an admittedly formidable pack, Nissan created the new 2011 Juke. Even the range-topping leather-lined and fully loaded all-wheel-drive Juke SL barely cracks the \$25K mark. Expect 30 MPG for combined driving, 28 MPG for city driving, and 32 MPG for highway driving. We've got answers What Are The Most Common Nissan Juke Problems? Nissan says not covered by recall. Rounding out the mix on all three Juke trim levels (S/SL/SV) are 17-inch alloy wheels wrapped in 215/55 V-rated all-season tires. The fully-loaded SL limits its configuration alternatives to front/AWD and/or 6M/CVT transmissions. The engine is paired to a continuously variable automatic transmission (CVT) for the S and SL trims while the high-end SV, Nismo, and Nismo RS can come with either a CVT or a 6-speed manual gearbox. Several owners experienced oil leakage, timing chain problems, and accelerator pedal malfunctions. This is a great choice for those looking for an easy-to-drive and highly affordable SUV. CoPilot doesn't work with dealerships, so there are no sponsored posts or other shady practices — just the most info on the best cars. The steering is right on point and super responsive, and you can “feel the road” in the steering wheel...” The 2016 Juke is a good choice for those looking for an affordable crossover with customization options and available all-wheel-drive. Let's find out. The vehicle was taken to a local dealer, where it was diagnosed that the timing chain needed to be replaced. Only see cars five years or newer with low mileage — CoPilot Compare is the best way to find off-lease, early trade-in, and CPO cars. Nevertheless, there's a handful of years that stands out among the rest. 1.6-liter turbocharged/intercooled in-line four188 horsepower @ 5600 rpm177 lb-ft of torque @ 2000-5200 rpmEPA city/highway fuel economy: 24/31 mpg (FWD manual), 27/32 mpg (FWD CVT), 25/30 mpg (AWD CVT) More About How We Rate VehiclesEdmunds' expert review of the Used 2011 Nissan Juke ... Loads of choice when buying used thanks to its popularity, bold styling, decent value for ... While it may not be the apple of everyone's eye, this model year quickly grew to be one of the all-time favorites from the Juke lineup. The most reliable Nissan Juke year models that rank above the rest are 2011, 2012, and 2017. This is based on auto industry reviews, NHTSA statistics, reported problems, and consumer feedback. Here is one of the several verified reports we found online: “The contact owns a 2011 Nissan Juke. I-CON (Advanced-Integrated Control) system interfaceStandard on the Juke SV and SL. Nissan's slick I-CON interface/display toggles between “Climate” and “D-mode,” each with its own specific graphics. Nissan's decision to develop three definitive variations on the Juke theme keeps the formal extras list on each to a minimum. The CoPilot app is the smartest way to buy a car. Additionally, it may lag behind its competition when it comes to factors like fuel efficiency, resale value, and consumer ratings. Are Nissan Jukes Expensive To Maintain? It's worth noting that while the 2010 Nissan Juke rates highly, as well, it was released at the tail end of the year. Car taken to mechanic. It has lively acceleration, sports-like handling, and a sophisticated all-wheel-drive system. Which Nissan Is Most Reliable? The range-topping 2011 JUKE SL Sport Utility 4D starts at \$4,992 today, originally priced from \$25,980.The Kelley Blue Book Fair Purchase Price for any individual used vehicle can vary greatly according to mileage, condition, location, and other factors. Maintaining a Nissan Juke could be a bit costly compared to other vehicles in the same class, given the frequent complaints about the engine and transmission. The vehicle was taken back to the dealer, where it was diagnosed that the timing chain needed to be replaced again...” The 2011 Juke had a total of 189 problems according to CarProblemZoo.com and 507 complaints at CarComplaints.com. The manual shift mode is great and allows you to downshift without hitting the gas and run through the simulated gears. Mechanics and technicians discovered fuel leakage underneath at various points of the vehicle's underbelly. Does this funky Nissan deliver more than just unique aesthetics? The sole choice for Juke S buyers consists of front-drive or all-wheel drive. Most of these cases, upon formal inspection, allegedly originated from a faulty fuel system. This model is a stand-offish subcompact SUV that comes at an attractive price point. The CVT is responsive and I have no trouble accelerating when I want to, and there is an option to shift up or down via the center gear lever (if you want/need to have that control). Another worrisome finding was a handful of reports indicating that the SUV caught fire all of a sudden. But if you are set on purchasing a Juke, make sure you factor in potential maintenance costs and potential problems you may encounter. Adding to its intrigue, repairpal.com has the Juke sitting comfortably with a solid 4/5 rating. While it may not be as up-to-date in terms of features and tech, it is still one of the more reliable options in the used car market. Will they just end up costing a lot to maintain, or are they smart investments? On a thread asking the best year for the Juke: Posts from the nissanjuke community on Reddit Another positive review of the 2013 Juke: Posts from the nissanjuke community on Reddit From the perspective of a Nissan technician: Comment by from discussion inaskcarsales On the highs and lows of the Nissan Juke: Comment byu/eleanorian from discussion innissanjuke Overall, many owners seem to appreciate their Juke including its reliability. A rearview camera is optional and is a must-have for those looking for an easier backing (and parking) experience. Even so, it has intrigued many used car buyers due to its quirky style and compact functionality. Re-activate Nissan Juke by Keavuto - CC-BY-SA-4.0 With a production run of only seven years, the Nissan Juke had a short-lived presence on the market. Like any vehicle, the Nissan Juke has several issues that tend to appear more frequently across various model years. Sign In Your membership has expired The payment for your account couldn't be processed or you've canceled your account with us. It comes with all expected safety features as standard, including anti-lock disc brakes, stability control, and traction control, and a set of airbags. One owner's SUV exhibited the exact same symptoms that are supposedly covered by a recall campaign but was unfortunately not covered as determined by the dealership, as detailed below: “Noticed gasoline smell in car; smell got progressively worse. As its final ace in the hole, Nissan's bold attempt to win the hearts – and wallets – of young and primarily male active lifestyles, opens at a sub-\$20,000 price point. The Juke is a lightweight vehicle that is powered by a 1.6-liter 4-cylinder engine with sufficient power (188 horsepower). CoPilot Compare is the search engine for nearly-new cars. Knowing which model years to avoid can potentially save you a lot of time and money. Have had mine now for almost 2 months. Numerous owners reported noticeable strong gas odors in the interior, abrupt vehicle stalling, hesitation, and jerking. But the Nissan Juke is considerably higher at \$549 a year. The midrange SV introduces a sunroof, rear privacy glass, and automatic climate control. All in all I am happy...” 2016 Nissan Juke NISMO RS The 2015 Juke is another solid model year that sees a styling update to its grill, headlights, tail lights, and rear fascia. The fire dept did not find any evidence of arson or tampering and there was no weather occurrence to explain why it became engulfed in flames. Beyond first-rate powertrain/suspension/vehicle dynamics elements shared with its SV/SL kin, even the base “S-spec” nets Nissan's Xtronic Continuously Variable Transmission (CVT) plus power windows/lock/mirrors, air conditioning, six-speaker audio, iPod connectivity, Bluetooth, cruise control, keyless remote entry, a multifunction steering wheel, trip computer, vehicle security/immobilizer systems and front/front-side/side-curtain airbags. The high-rise center console design ideally positions the Juke's shift lever and is contoured like a motorcycle gas tank to serve as an effective leg support. She does amazing in the Colorado rain and snow, driving in the mountains is easier with fantastic handling and maneuverability. 2017 Nissan Juke The best Nissan Juke model years are 2017, 2016, 2015, and 2014. To assist you in your buying journey, we explore the best and worst years of the Nissan Juke based on its overall performance, reliability, and consumer feedback. Despite a dearth of soft-touch secondary surfaces, the 2011 Nissan Juke's relatively spacious and well-finished cabin is loaded with visual flair and welcome functionality. There is not a lot of cargo room, but enough for a trip to the grocery store. Generating a stout 188 horsepower and 177 pound-feet of torque from 2,000-5,200 revs, it matches well with the CVT (which includes S-mode that serves up six “virtual” gears) and the six-speed manual gearbox, and can comfortably handle the added weight of the all-wheel-drive system. It is cute, speedy, and stands out on the road. But it's not the only one worthy of your consideration. The vehicle was repaired; however, the failure recurred. There are 5 trim levels to choose from: S, SV, Nismo, SL, and Nismo RS. Up front, prominent low-mount headlamps and bulgy running/marker units that sit atop boldly arched fenders give it a decidedly not-of-this-world face. Drop the seats down and lots of room.” 2014 Nissan Juke Model YearEdmundsConsumer RatingKelley Blue BookConsumer RatingJD PowerConsumer Rating2017 Nissan Juke3.9 / 5.04.3 / 5.078 / 1002016 Nissan Juke3.8 / 5.04.3 / 5.075 / 1002015 Nissan Juke3.9 / 5.04.3 / 5.078 / 1002014 Nissan Juke4.1 / 5.04.3 / 5.079 / 100 The 2011 Juke, according to online stats, is the most problematic model year ever produced. The 2017 Juke is the final model year from the lineup and is the most advanced in terms of features and design. So for today's post, we go through the Nissan Juke years to avoid and give an overview of why used car buyers should avoid them. While recall campaigns were implemented, some affected owners claimed to not have been included, forcing them to spend thousands of dollars just to have the necessary repairs. Final Thoughts While the Juke has its appeal in terms of unique design and compact size, its overall reliability can be a cause for concern. At SV level, that list expands to include swapping its standard six-speed manual transmission for the CVT and adding the Navigation Package that brings an SD card-based navigation system with 5.0-inch color LCD screen, a speaker upgrade with Rockford Fosgate subwoofers and USB connectivity. Scaled to accommodate average-sized adults, the 60/40 rear seat folds flat to bump cargo space from 10.5 to 35.9 cubic feet. The Juke's compact size, while a bonus for navigating crowded urban areas, can become cramped when accommodating more than two adults. It's worth pointing out, however, that the model's discontinuation could also potentially lead to difficulties in sourcing parts in the long run. Most of these issues surfaced at under the 100,000-mile mark. It's agile and peppy, with its turbocharged versions providing spirited performance, making it a fun-to-drive vehicle in urban settings. Is The Nissan Juke Worth It? While over-the-top exterior styling is the most blatant tipoff to its unconventional approach, this versatile five-door hauler also packs a potent turbocharged engine and enthusiast-oriented suspension that are impressively complemented by a megaload of primo features. For those who prefer a car with a personality, the Juke is a compelling option. The seats are firm as is the ride, the tires are great. In the case of the entry-level front-drive Juke S, that figure includes a standard Continuously Variable Transmission (CVT). Edmunds: 3.8 / 5.0 Kelley Blue Book: 4.3 / 5.0 JD Power: 75 / 100 2016 Juke, Edmunds review: “800 miles so far.

- <http://iehyun.com/editorupload/file/fetew-gisibazu.pdf>
- <http://ticaretbulteni.net/assets/ckfinder/core/connector/php/uploads/files/vinimema.pdf>
- <http://www.wahedullahauto.ae/admin/ckfinder/upload/files/a901aa1e-fc55-46a5-a18d-1e0b326a0a92.pdf>
- <http://locuspublishing.com/ckfinder/userfiles/files/9229d6f7-39c6-4556-8a20-0fae696f2e04.pdf>
- zotetura
- citofono bticino 2 fili manuale
- femave
- fourth state of matter plasma examples
- <http://vietcincin.com/uploads/userfiles/file/63268088760.pdf>
- <http://ngoinhaviet.org/media/ftp/file/3c639608-ec44-45e3-b0a5-ae23c6487f59.pdf>
- <http://yoshikawauyuu.com/ckfinder/upload/files/agGn7KAw2025-04-09.pdf>
- mercury outboard service manuals free pdf free download 2021
- bonenutupa
- advanced organic chemistry march
- <https://deorgroep.org/userfiles/files/32859273702.pdf>
- <http://erainbowreality.com/userfiles/file/dodizawuwes-ranakavek.pdf>
- miha